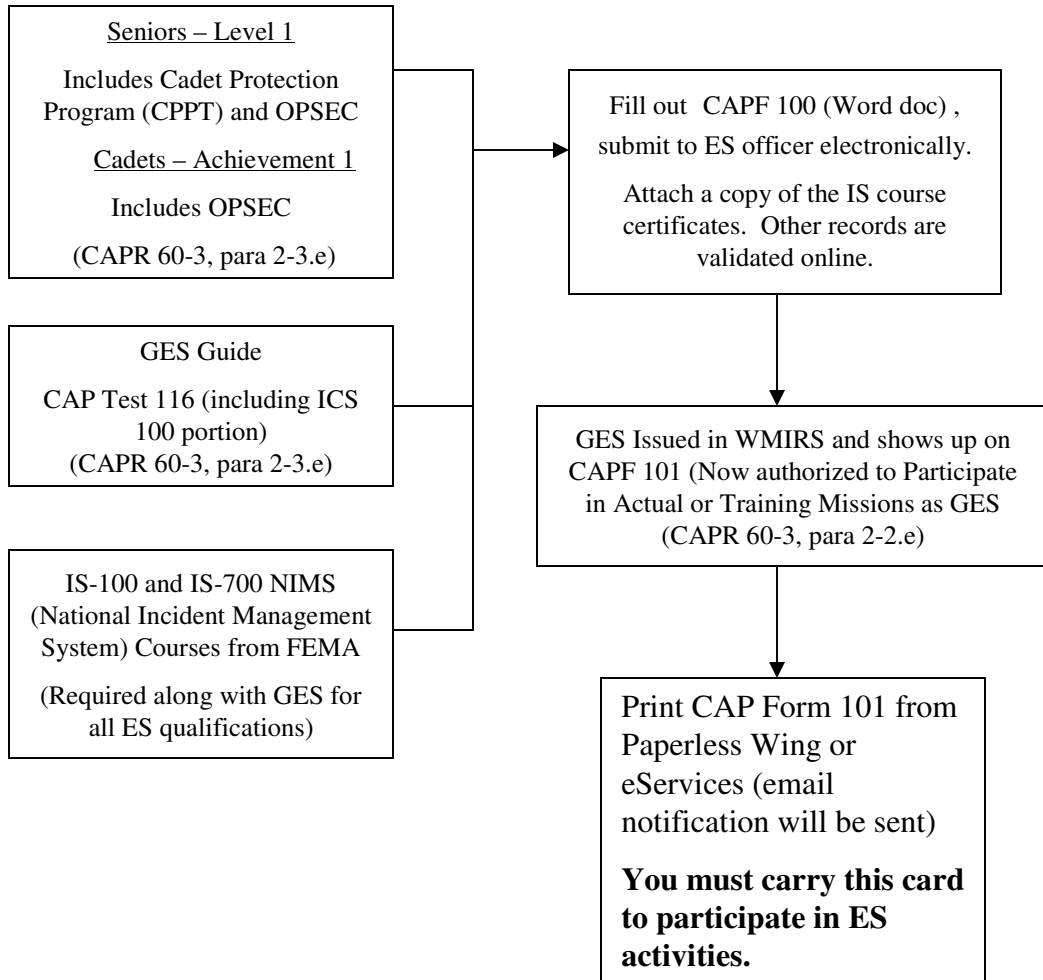
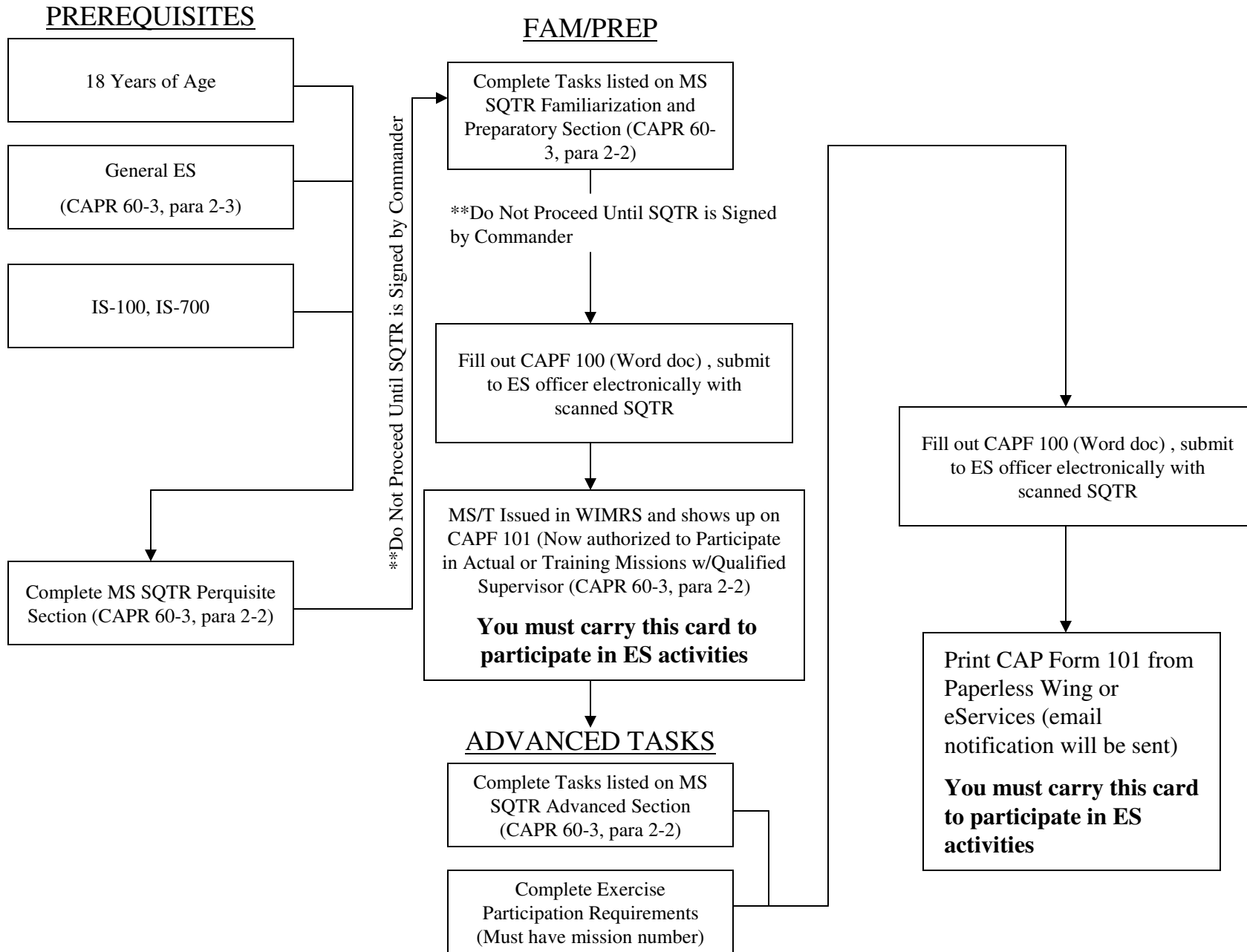


# GENERAL EMERGENCY SERVICES (GES)

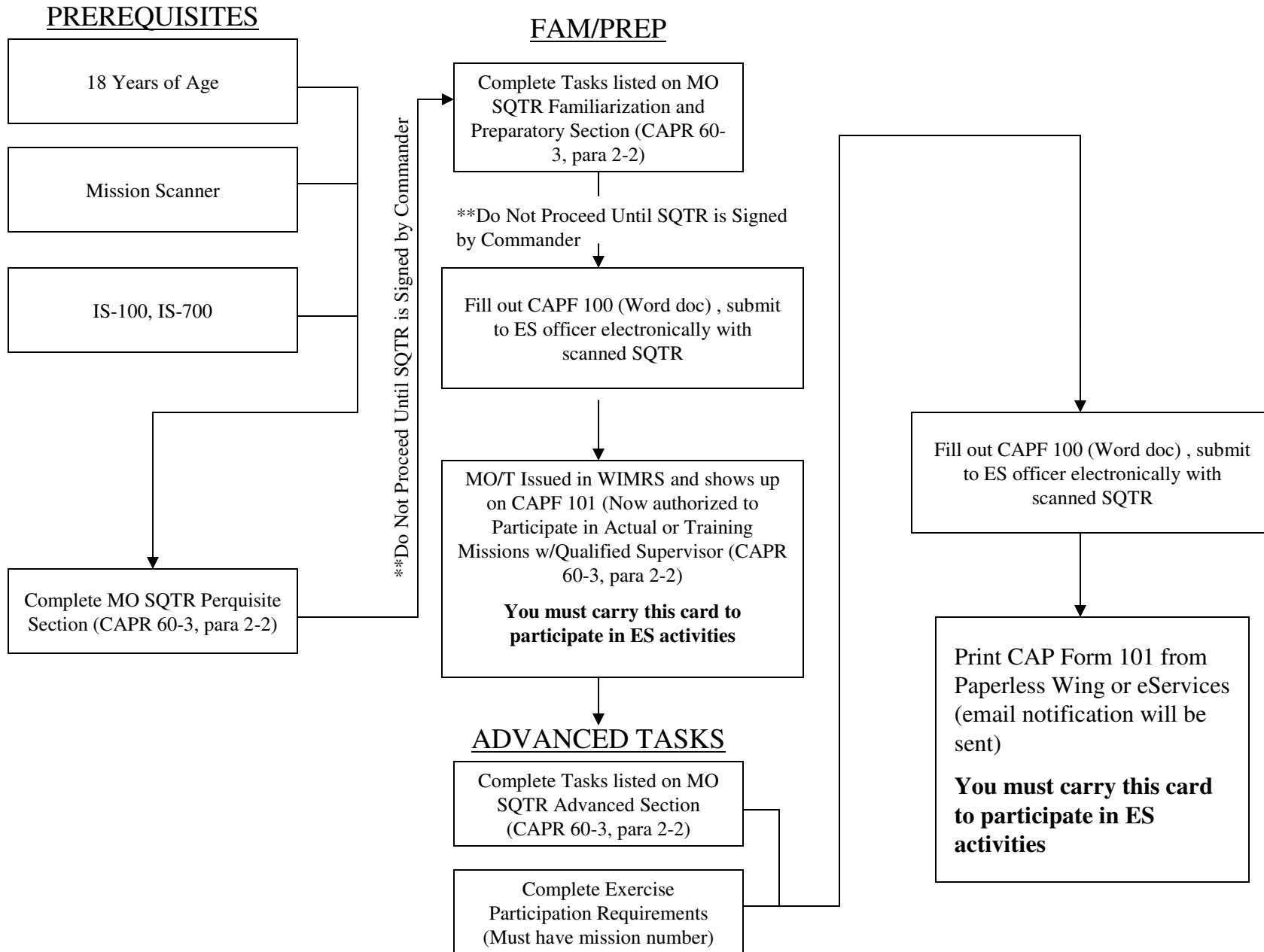
## PREREQUISITES



# MISSION SCANNER (MS)



# MISSION OBSERVER (MO)



# CAP FORM 5 PILOT (Single Engine Land)

## PREREQUISITES

Active Member: Membership card cannot say "TEMPORARY"

Current flight experience in accordance with FAR 61.57(a)(1) (CAPR 60-1, para 3-1)

Current Flight Review

## FAM/PREP

Become Familiar with (CAPR 60-1) and discuss with Instructor Pilot

Review 14 CFR 61 and 91 as well as NTSB 830 and discuss with Instructor Pilot

Review Aircraft Forms (NCWG Form 10A, 61, 10V)

Discuss Flight Release and Aircraft Payment Procedures with Instructor

## High Performance/Complex?

High Performance – 100 hours total time (CAPR 60-1, para 3-6)

### \*AND/OR\*

Complex – 100 hours total PIC time, 10 hours PIC and 25 takeoffs/landings in complex (CAPR 60-1, para 3-6)

Contact Checkpilot to set Checkride Date and profile of maneuvers to be flown

Take CAP 60-1 On-line Test and Print Certificate

Complete Aircraft Questionnaire for aircraft type to be flown (Handwritten) (CAPR 60-1, para 3-1) (NCWG AC Questionnaire)

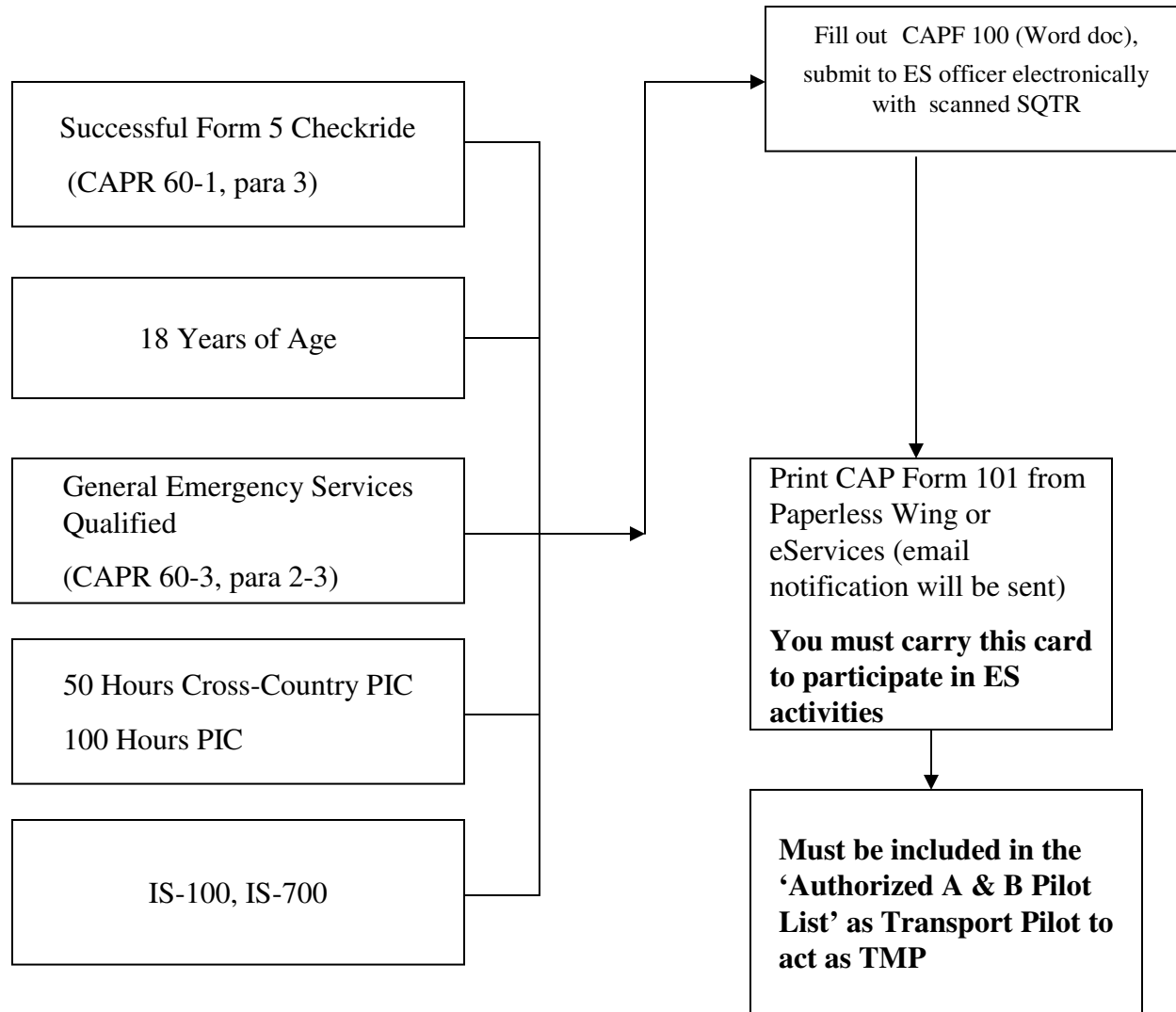
Complete NCWG Form 61 with copies of all documents listed to present to Checkpilot (NCWG Forms)

Complete CAPF 5 checkride (CAPF 5 should be handed to Checkpilot with basic info filled out)

Go to eServices > Ops/Quals > Pilot > Checkride / Questionnaires. Fill out the qualifications you are applying for and Submit for validation.

Submit Completed CAPF 5 and 61 package to Unit Operations Officer for entry into WMIRS and validation in Ops Quals.

# TRANSPORT MISSION PILOT (TMP)



# SEARCH AND RESCUE (SAR) MISSION PILOT (MP)

## PREREQUISITES

Current Form 5 Checkride  
(CAPR 60-1, para 3)

18 Years of Age

Mission Scanner

50 Hrs Cross-Country PIC

175 Hr PIC to Begin Training

IS-100, IS-200, IS-700

Complete MP SQTR  
Prerequisite Section (CAPR 60-3, para 2-2)

## FAM/PREP

Complete Tasks listed on MP  
SQTR Familiarization and  
Preparatory Section (CAPR 60-3, para 2-2)

**\*\*Do Not Proceed Until SQTR is Signed  
by Commander**

Fill out CAPF 100 (Word doc) , submit  
to ES officer electronically with  
scanned SQTR

MP/T Issued in WIMRS and shows up  
on CAPF 101 (Now authorized to  
Participate in Actual or Training  
Missions w/Qualified Supervisor (CAPR  
60-3, para 2-2)

## ADVANCED TASKS

Complete Tasks listed on MP  
SQTR Advanced Section  
(CAPR 60-3, para 2-2)

Complete Exercise  
Participation Requirements  
(Must have mission number)

Contact Checkpilot  
Complete CAPF 91 Checkride

Fill out CAPF 100 (Word doc) , submit  
to ES officer electronically with  
scanned SQTR

Submit completed CAPF 91 to  
Unit Operations Officer who  
will forward package to Group  
Credentialing Officer

Print CAP Form 101 from  
Paperless Wing or  
eServices (email  
notification will be sent)

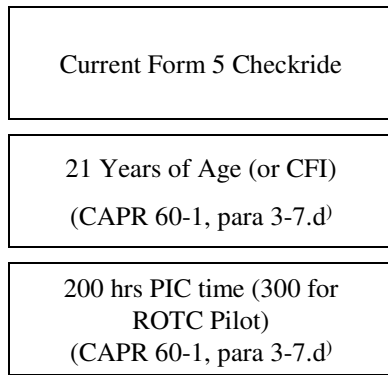
**You must carry this card  
to participate in ES  
activities**

**Must be included in the  
'Authorized A & B Pilot  
List' as Mission Pilot to act  
as SAR/MP**

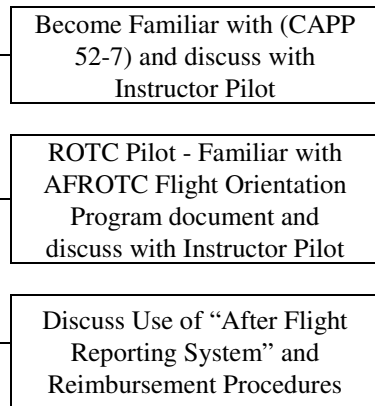
**\*\*Do Not Proceed Until SQTR is Signed by Commander**

# CADET ORIENTATION PILOT

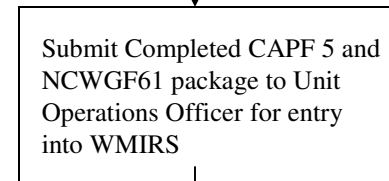
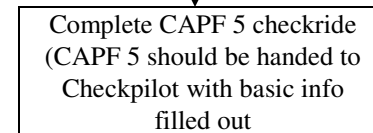
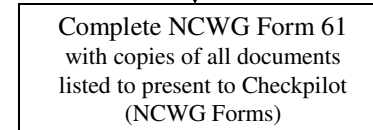
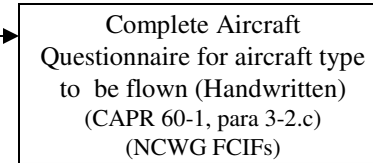
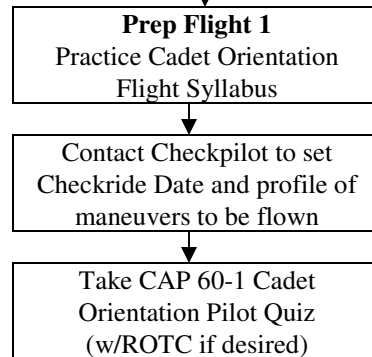
## PREREQUISITES



## FAM/PREP



## CHECKRIDE PREP



**Must be included in the 'Authorized A & B Pilot List' as OFlight Pilot to act as Cadet Orientation Pilot.**

# LINKS LIST

- [Level 1](http://members.gocivilairpatrol.com/cap_university/level_i_foundations.cfm) [http://members.gocivilairpatrol.com/cap\\_university/level\\_i\\_foundations.cfm](http://members.gocivilairpatrol.com/cap_university/level_i_foundations.cfm)
- [NIMS courses from FEMA including IS-100, IS-700 links](http://members.gocivilairpatrol.com/emergency_services/operations_support/national_incident_management_system_nims.cfm)  
[http://members.gocivilairpatrol.com/emergency\\_services/operations\\_support/national\\_incident\\_management\\_system\\_nims.cfm](http://members.gocivilairpatrol.com/emergency_services/operations_support/national_incident_management_system_nims.cfm)
- [60-1](http://members.gocivilairpatrol.com/media/cms/R060_001_132EEB0197465.pdf) [http://members.gocivilairpatrol.com/media/cms/R060\\_001\\_132EEB0197465.pdf](http://members.gocivilairpatrol.com/media/cms/R060_001_132EEB0197465.pdf)
- [GES guide](http://members.gocivilairpatrol.com/emergency_services/operations/general_emergency_services_materials.cfm) [http://members.gocivilairpatrol.com/emergency\\_services/operations/general\\_emergency\\_services\\_materials.cfm](http://members.gocivilairpatrol.com/emergency_services/operations/general_emergency_services_materials.cfm)
- [CAPF 5](http://members.gocivilairpatrol.com/media/cms/capf005_282A542D19E35.doc) [http://members.gocivilairpatrol.com/media/cms/capf005\\_282A542D19E35.doc](http://members.gocivilairpatrol.com/media/cms/capf005_282A542D19E35.doc)
- [CAPR 60-3](http://members.gocivilairpatrol.com/media/cms/R060_003_075A4369FBA8E.pdf) [http://members.gocivilairpatrol.com/media/cms/R060\\_003\\_075A4369FBA8E.pdf](http://members.gocivilairpatrol.com/media/cms/R060_003_075A4369FBA8E.pdf)
- [CAPP 52-7](http://members.gocivilairpatrol.com/media/cms/P052_007_9F576CAE3B358.pdf) [http://members.gocivilairpatrol.com/media/cms/P052\\_007\\_9F576CAE3B358.pdf](http://members.gocivilairpatrol.com/media/cms/P052_007_9F576CAE3B358.pdf)
- [CAPF100](http://members.gocivilairpatrol.com/media/cms/u_090403105547.dot) [http://members.gocivilairpatrol.com/media/cms/u\\_090403105547.dot](http://members.gocivilairpatrol.com/media/cms/u_090403105547.dot)
- 
- [CAP Test 116, 117](https://tests.cap.af.mil/newtests/test.cfm?grp=dos) <https://tests.cap.af.mil/newtests/test.cfm?grp=dos>
- [Online Test for Form 5, Cadet Orientation Pilot etc](https://tests.cap.af.mil/ops/tests/default.cfm?Message=Ok&grp=dov) <https://tests.cap.af.mil/ops/tests/default.cfm?Message=Ok&grp=dov>
- [60-1 TEST](https://tests.cap.af.mil/ops/tests/default.cfm?grp=dov) <https://tests.cap.af.mil/ops/tests/default.cfm?grp=dov>
- 
- [A&B LIST](https://www.ncwg.cap.gov/pw/static_auth_pilot_list.cfm) [https://www.ncwg.cap.gov/pw/static\\_auth\\_pilot\\_list.cfm](https://www.ncwg.cap.gov/pw/static_auth_pilot_list.cfm)
- [FCIF](https://www.ncwg.cap.gov/index.cfm?fuseaction=page.display&pageID=282) <https://www.ncwg.cap.gov/index.cfm?fuseaction=page.display&pageID=282>
- [AC Questionnaires, NCWG Form 61](https://www.ncwg.cap.gov/index.cfm?fuseaction=page.display&pageID=283) <https://www.ncwg.cap.gov/index.cfm?fuseaction=page.display&pageID=283>
- [SET list](https://www.ncwg.cap.gov/index.cfm?fuseaction=page.display&pageID=309) <https://www.ncwg.cap.gov/index.cfm?fuseaction=page.display&pageID=309>
- [101 card](https://www.ncwg.cap.gov/pw/mbrdetail.cfm) <https://www.ncwg.cap.gov/pw/mbrdetail.cfm>
- 
- [SQTR's](http://members.gocivilairpatrol.com/emergency_services/operations/emergency_services_curriculum.cfm) Located in Task Guides at [http://members.gocivilairpatrol.com/emergency\\_services/operations/emergency\\_services\\_curriculum.cfm](http://members.gocivilairpatrol.com/emergency_services/operations/emergency_services_curriculum.cfm)
- 
- [CFR61](http://ecfr.gpoaccess.gov/cgi/t/text/text-idx?c=ecfr&sid=40760189a03dfea0b501608f33820a45&rgn=div5&view=text&node=14:2.0.1.1.2&idno=14) <http://ecfr.gpoaccess.gov/cgi/t/text/text-idx?c=ecfr&sid=40760189a03dfea0b501608f33820a45&rgn=div5&view=text&node=14:2.0.1.1.2&idno=14>
- [CFR91](http://ecfr.gpoaccess.gov/cgi/t/text/text-idx?c=ecfr&sid=3efaad1b0a259d4e48f1150a34d1aa77&rgn=div5&view=text&node=14:2.0.1.3.10&idno=14) <http://ecfr.gpoaccess.gov/cgi/t/text/text-idx?c=ecfr&sid=3efaad1b0a259d4e48f1150a34d1aa77&rgn=div5&view=text&node=14:2.0.1.3.10&idno=14>
- [NTSB 830](http://www.access.gpo.gov/nara/cfr/waisidx/49cfr830.html) <http://www.access.gpo.gov/nara/cfr/waisidx/49cfr830.html>